

Information gratefully received from Alina Gavruta

The Danube is the South border of Romania. On the other side of Danube is Serbia and further on Bulgaria. You can choose any shore to cycle along . Both will give you breath-taking scenery. Once the river enters Romania, it crosses amazing gorges. The place is called " Clistura Dunarii" .



Further on, the Danube reaches " Cazanele Dunarii" or Danube Boilers. Very similar scenery.



This sculpture represent Decebalus King, the last king of Dacia.

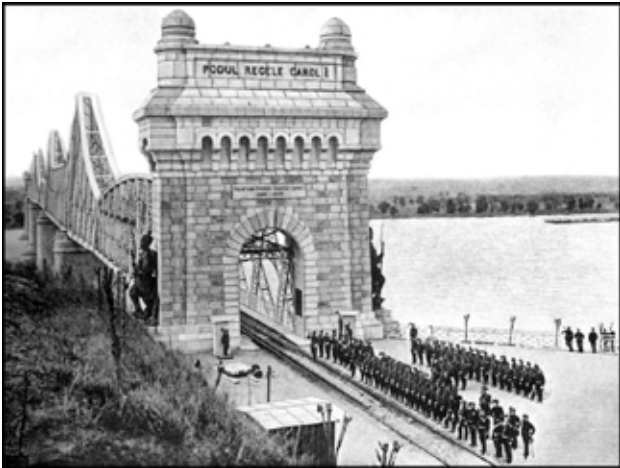


The ride through this beautiful gorge ends at an enormous and hideous dam built in communism time. For this construction the communists flooded an island with a town on it.

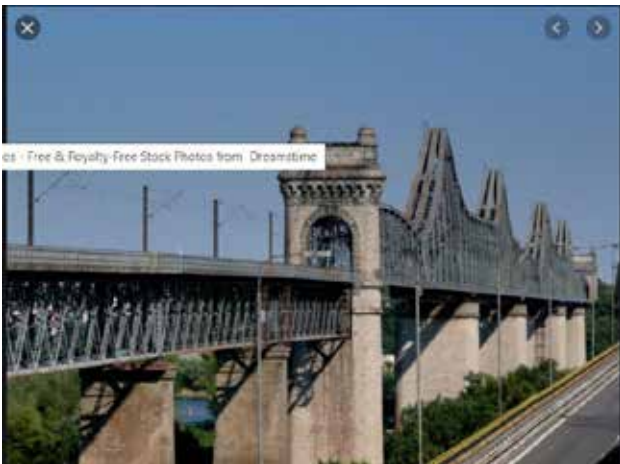


From now on, the scenery changes, riding mainly in a rural and arid zone.

Not long before Danube Delta there is a jewel of Romanian architecture. Anghel Saligny Bridge.



The bridge, is a bridge for trains only and was built between 1890 and 1895 over the Danube, the Borcea branch of the Danube and the Balta Ialomitei island, and when it was completed, with a total length (with viaducts) of 4,087.95 m (13,411.9 ft), it became the longest bridge in Europe and the second longest in the world. The bridge was designed by the Romanian engineer Anghel Saligny and now it is re-named after him. Previously name was The King's Carol I Bridge. The bridge connected an very isolated region with the rest of the country.



Here is the Danube Delta. Danube Delta is an amazing but very challenging area. It is an adventure, once in a life. It is an area mostly with water, the roads can be sometimes flooded , or other routes are on a sandy ground. Still, here you can see wild horses (not ponies) running free, you could fish Sturgeon but sorry, it is illegal. You can meet curly pelicans, swans, mangrove forests, water lilies, and so on...



The Danube Delta is the second largest river delta in Europe, after the Volga Delta, and is the best preserved on the continent. The total area of the Danube Delta is 5,165 km². For comparison Devon County, UK is 6,707 km².



A tour through Delta will take at least 1 week. The final destination is the Black Sea.

If you decide to go and visit Danube Delta, please don't forget to get a very good mosquito repellent.